

Eastern Township

61461 115th Street, Parkers Prairie MN, 56361

16 April 2024

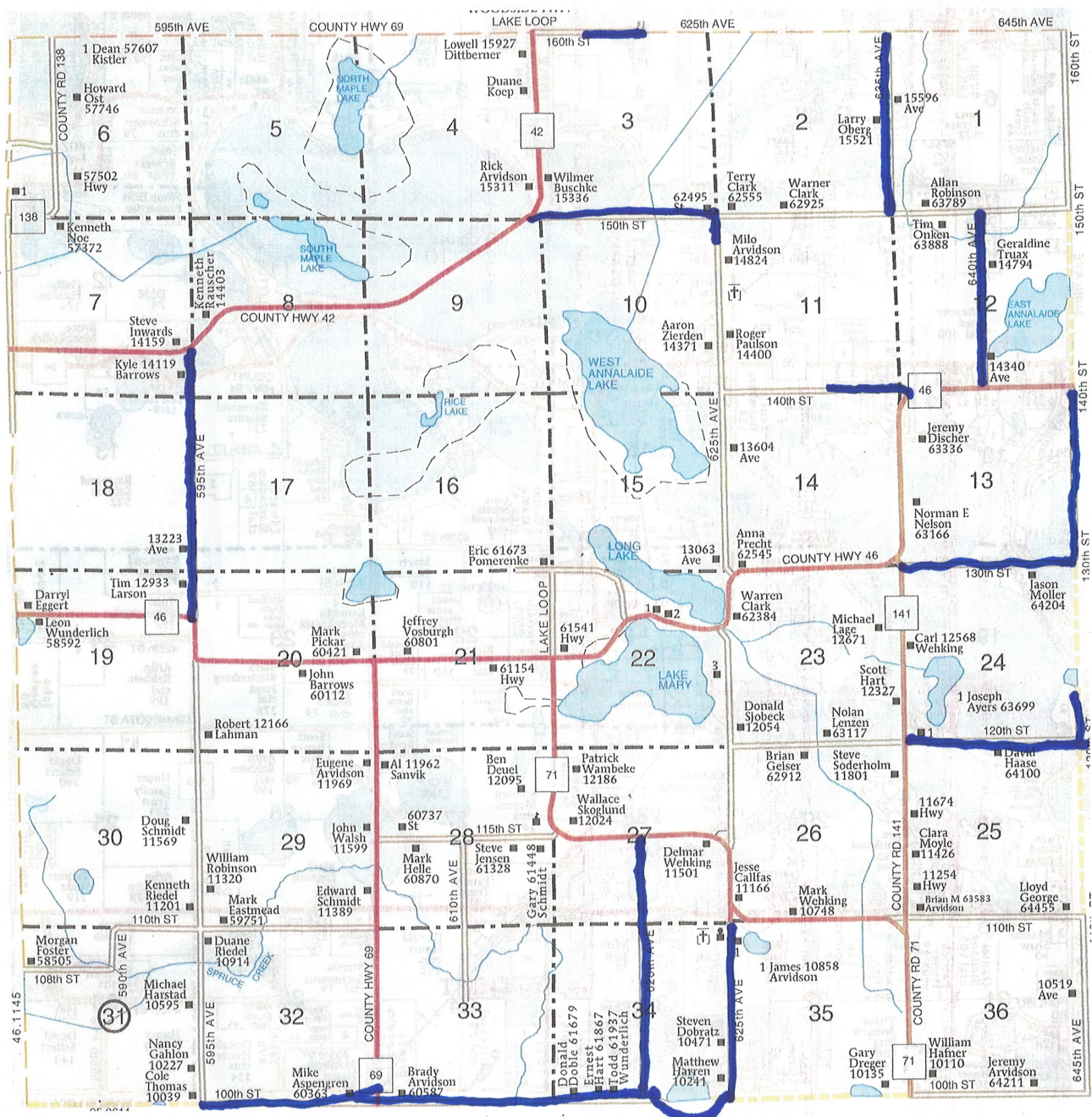
Spring Road and Bridge Inspection

On 16 April 2023 a road and bridge inspection was conducted by Supervisor, Mike Lage, Supervisor, Jason Moller and Supervisor Amanda Dobratz. Tim Bowman of Bowman Grading and Graveling was also present.

All gravel roads in Eastern Township were inspected for condition with additional projects decided at the Annual Meeting.

Culvert aprons on 610th Avenue and 595th Avenue need to be backfilled. Culvert on 595th Avenue needs to be replaced and aprons need to be installed on the culvert on 110th Street. The turn chevron on 115th needs to be reinstalled. Additionally gravel will be placed on all roads identified in the attached map.

Michael W. Lage
Supervisor, Eastern Township
320-533-0760
mlage@midwestinfo.net



46.1.145

31

595th Ave

100th St

108th St

110th St

120th St

130th St

140th St

150th St

160th St

170th St

180th St

190th St

200th St

210th St

220th St

230th St

240th St

250th St

260th St

270th St

280th St

290th St

300th St

310th St

320th St

330th St

340th St

350th St

360th St

370th St

380th St

390th St

400th St

410th St

420th St

430th St

440th St

450th St

460th St

470th St

480th St

490th St

500th St

510th St

520th St

530th St

540th St

550th St

560th St

570th St

580th St

590th St

600th St

610th St

620th St

630th St

640th St

650th St

660th St

670th St

680th St

690th St

700th St

710th St

720th St

730th St

740th St

750th St

760th St

770th St

780th St

790th St

800th St

810th St

820th St

830th St

840th St

850th St

860th St

870th St

880th St

890th St

900th St

910th St

920th St

930th St

940th St

950th St

960th St

970th St

980th St

990th St

1000th St

1010th St

1020th St

1030th St

1040th St

1050th St

1060th St

1070th St

1080th St

1090th St

1100th St

1110th St

1120th St

1130th St

1140th St

1150th St

1160th St

1170th St

1180th St

1190th St

1200th St

1210th St

1220th St

1230th St

1240th St

1250th St

1260th St

1270th St

1280th St

1290th St

1300th St

1310th St

1320th St

1330th St

1340th St

1350th St

1360th St

1370th St

1380th St

1390th St

1400th St

1410th St

1420th St

1430th St

1440th St

1450th St

1460th St

1470th St

1480th St

1490th St

1500th St

1510th St

1520th St

1530th St

1540th St

1550th St

1560th St

1570th St

1580th St

1590th St

1600th St

1610th St

1620th St

1630th St

1640th St

1650th St

1660th St

1670th St

1680th St

1690th St

1700th St

1710th St

1720th St

1730th St

1740th St

1750th St

1760th St

1770th St

1780th St

1790th St

1800th St

1810th St

1820th St

1830th St

1840th St

1850th St

1860th St

1870th St

1880th St

1890th St

1900th St

1910th St

1920th St

1930th St

1940th St

1950th St

1960th St

1970th St

1980th St

1990th St

2000th St

2010th St

2020th St

2030th St

2040th St

2050th St

2060th St

2070th St

2080th St

2090th St

2100th St

2110th St

2120th St

2130th St

2140th St

2150th St

2160th St

2170th St

2180th St

2190th St

2200th St

2210th St

2220th St

2230th St

2240th St

2250th St

2260th St

2270th St

2280th St

2290th St

2300th St

2310th St

2320th St

2330th St

2340th St

2350th St

2360th St

2370th St

2380th St

2390th St

2400th St

2410th St

2420th St

2430th St

2440th St

2450th St

2460th St

2470th St

2480th St

2490th St

2500th St

2510th St

2520th St

2530th St

2540th St

2550th St

2560th St

2570th St

2580th St

2590th St

2600th St

2610th St

2620th St

2630th St

2640th St

2650th St

2660th St

2670th St

2680th St

2690th St

2700th St

2710th St

2720th St

2730th St

2740th St

2750th St

2760th St

2770th St

2780th St

2790th St

2800th St

2810th St

2820th St

2830th St

2840th St

2850th St

2860th St

2870th St

2880th St

2890th St

2900th St

2910th St

2920th St

2930th St

2940th St

2950th St

2960th St

2970th St

2980th St